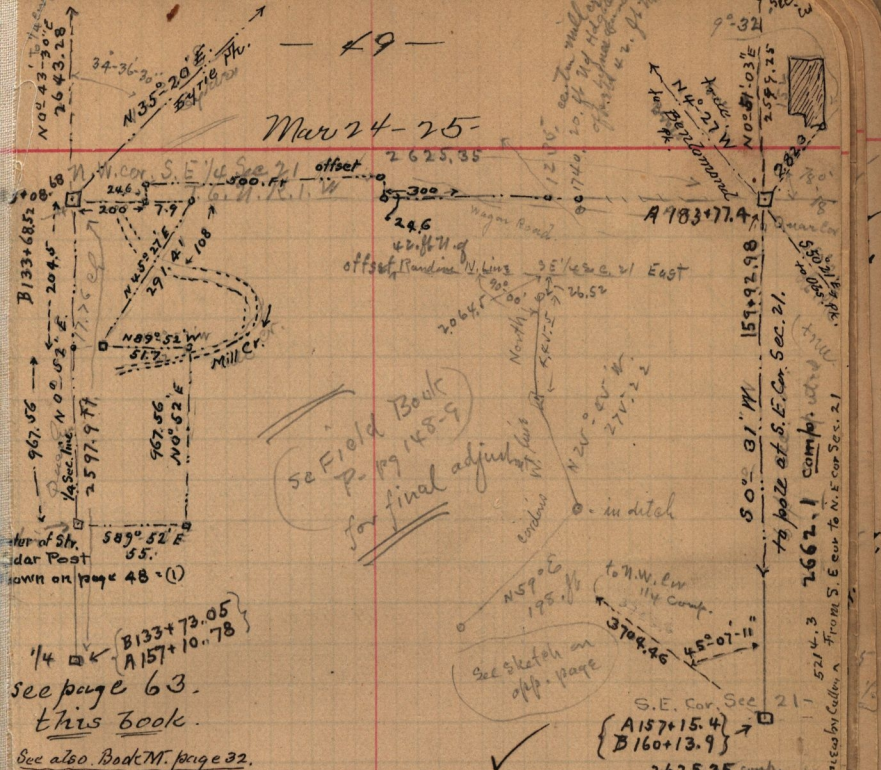


Mar 24-25



see page 63.  
this book.  
 See also Book M. page 32.  
 " " Plot Book " 89

15° E to Erie  
 trace course

Note! The true S. line running N 99° 28' E along N. line of S.E. 1/4 Sec. 21 - would intersect Cordons W. Line 3.89 ft N. of the N. End of the distance marked 445.5 ft. (Correct.)

59-34  
 23-41  
 113-15  
 66-45

Running due E. from N.W. Cor. of S.E. 1/4 Sec. 21. T. 6. N. R. 1. W.  
 207.9 ft set hub. 200. set. hub. and offset 24.6 ft. to North  
 700. ft. set hub & offset South 24.6 ft on line. 1000. = about  
 center of road. 1100. ft set hub. 1235. center of Mill Creek.  
 15. ft North of center of bridge. 1740. is 20 ft North of headgate  
 of Lynne water ditch bearing N.W. thence offset 42. ft  
 north to avoid Mill Cr. 2064.5 = point intersecting Cordons W. line  
 26.52 ft N. of hub set from South on dist. 445.5 and being 10 ft N. of center  
 of Creek near West side of Bridge (N.E. angle of intersection = 90° 00')

2410 = Cent. mill Cr. 2626.08 ft = point 24.65 ft South of N.E. Cor of S.E. 1/4  
 Sec. 21. 282.3 ft S.W. of S.E. cor factory making the Quar Sec. line  
 run N 84° 33' E 2626.08 Ft. Tang. 1.27 = 0.02538

5214.3  
 712.5 by Culture A  
 From S. E. to N. E. cor Sec. 21